

CelPlan at a Glance



- Providing solutions to the wireless industry since 1992
- Employee owned
- 500+ employees
- Leader in 3G / 4G designs and solutions
- Innovative software applications and value added consultancy.
- Published technical experience and methodologies
- Highly experienced staff
- Hundreds of implemented designs
- Headquarters in Reston, VA, USA
- Other global offices in North America, South America, Europe, Africa and Middle East

CelPlan Technologies, Inc. headquartered in Reston Virginia, USA is a leading provider of radio frequency (RF) planning; optimization tools, training, and value added engineering services and consulting to the wireless industry. CelPlan has facilitated the design, optimization and expansion of large and small networks throughout the U.S, Canada, Latin America, Europe and Asia.

CelPlan has rapidly established itself as an innovative leader in providing the most advanced engineering solutions for the wireless industry. CelPlan brings a powerful and sophisticated portfolio of engineering capabilities to bear on the design and development of RF infrastructure (Wi-Fi Radio Solutions, MSC, BSC, BTS) as well as on the planning, deployment and optimization of wireless networks. The company's broad, inclusive focus on all wireless industry segments from equipment and software to applications enables it to successively and efficiently resolve the most intractable wireless problems.



By providing innovative software applications and high value-added consultancy, CelPlan creates new opportunities for mobile operators, vendors and partners to boost performance, reduce costs, and retain customers.

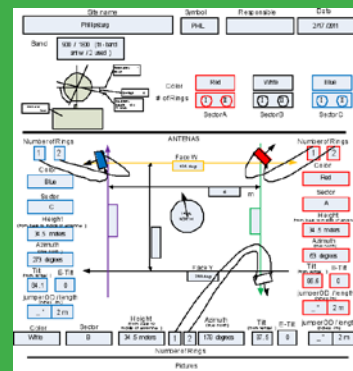
wireless project or deployment”

CellDesigner Suite Modular Approach

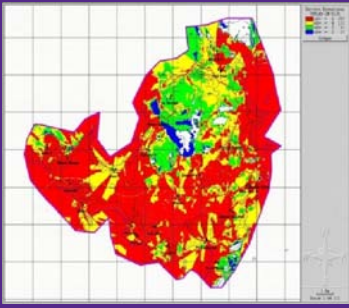
CelPlan’s RF solutions are offered in a modular basis so clients can configure licenses as needed depending on the stage of the wireless design. The core CellDesigner module being the basis for additional capabilities and technologies. The matrices below provide an overview of the modular approach.

CelPlan Engineering Solutions		GSM/ GPRS/ EDGE	UMTS/ HSPA	LTE	cdma2000/ 1XRTT	EVDO	WiMAX	Digital TV	LMR/PMR	DVB-SH	LMDS/ MMDS	Backhaul	Radar	Windfarm
Technical Site Survey														
new deployments		◆	◆	◆	◆	◆	◆	◆	◆	◆	◆	◆		
documentation		◆	◆	◆	◆	◆	◆	◆	◆	◆	◆	◆		
antenna/ cable testing		◆	◆	◆	◆	◆	◆	◆	◆	◆	◆	◆		
interference scanning		◆	◆	◆	◆	◆	◆	◆	◆	◆	◆	◆		
Drive Test														
calibration		◆	◆	◆	◆	◆	◆	◆	◆	◆	◆	◆		
interference scanning		◆	◆	◆	◆	◆	◆	◆	◆	◆	◆	◆		
call placement		◆	◆	◆	◆	◆	◆	◆	◆	◆	◆	◆		
Phone testing		◆	◆	◆	◆	◆	◆	◆	◆	◆	◆	◆		
Network design														
Network optimization		◆	◆	◆	◆	◆	◆	◆	◆	◆	◆	◆		
Network studies		◆	◆	◆	◆	◆	◆	◆	◆	◆	◆	◆	◆	◆
Consulting		◆	◆	◆	◆	◆	◆	◆	◆	◆	◆	◆	◆	◆
Professional services														
Business case preparation		◆	◆	◆	◆	◆	◆	◆	◆	◆	◆	◆	◆	◆
RFP preparation and analysis		◆	◆	◆	◆	◆	◆	◆	◆	◆	◆	◆	◆	◆
Specialized Studies		◆	◆	◆	◆	◆	◆	◆	◆	◆	◆	◆	◆	◆
RF Interference		◆	◆	◆	◆	◆	◆	◆	◆	◆	◆	◆	◆	◆
RF Safety Analysis		◆	◆	◆	◆	◆	◆	◆	◆	◆	◆	◆	◆	◆

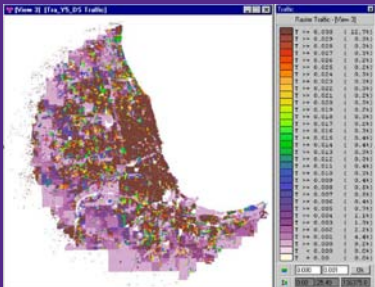
Besides being a provider of market leading planning and optimization solutions, CelPlan also offers professional services, training, and consulting. Our on-staff engineers bring with a wealth of industry experience, and use CelPlan’s own solutions in real deployments in projects both in-house and on customer premises. This field experience makes CelPlan much more than just a software company but a true technology LEADER.



CelPlan network documentation campaigns provide our customers with a detailed view of their assets and network. Integration of this information with the planning tool brings a wealth of information directly to the desk of the RF engineers.



Our complete suite of planning and optimization tools allows CelPlan to fully understand our customers' networks and successfully address key concerns and challenges



CelPlan suite of tools presents unique features and analysis capabilities to aid our customers' in understanding and optimizing network performance

Leading the World

CelPlan is a world leading provider of wireless consulting, services, and solutions for fixed and mobile network operators globally; one of the few companies worldwide, with this unique end-to-end consultancy offering and level of deployment experience.

CelPlan invests heavily in R&D and actively promotes proper engineering practices in all wireless design and optimization projects within the company. CelPlan originated back when early analog cellular systems were first deployed and has incorporated best practices in deployments for over 20 years. Our team consists of proven international leaders in their field with a true sense of excellence and integrity.

Our corporate office is in the Washington, DC, area with offices around the globe. Contact us today to learn more about our company and our solutions.



CelPlan strives to be a true partner for its customers, actively participating from the beginning of the project through rollout and optimization phases.



CelPlan Technologies, Inc.
 Reston, VA 20191.
 For more information contact +1-703-259-4020
 sales@celplan.com or visit www.celplan.com